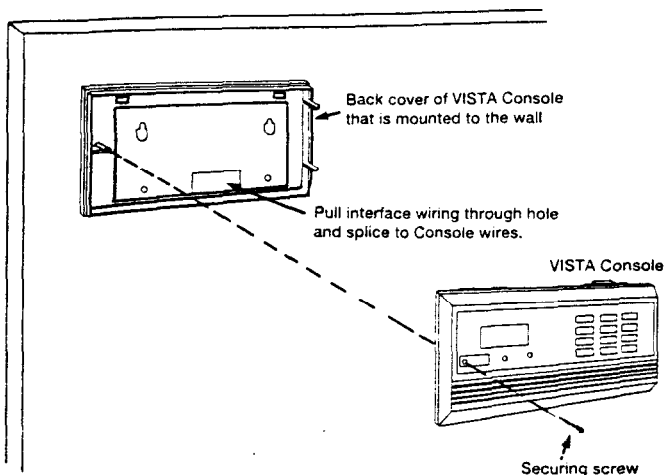


SURFACE MOUNTING 4137AD/5137AD CONSOLES

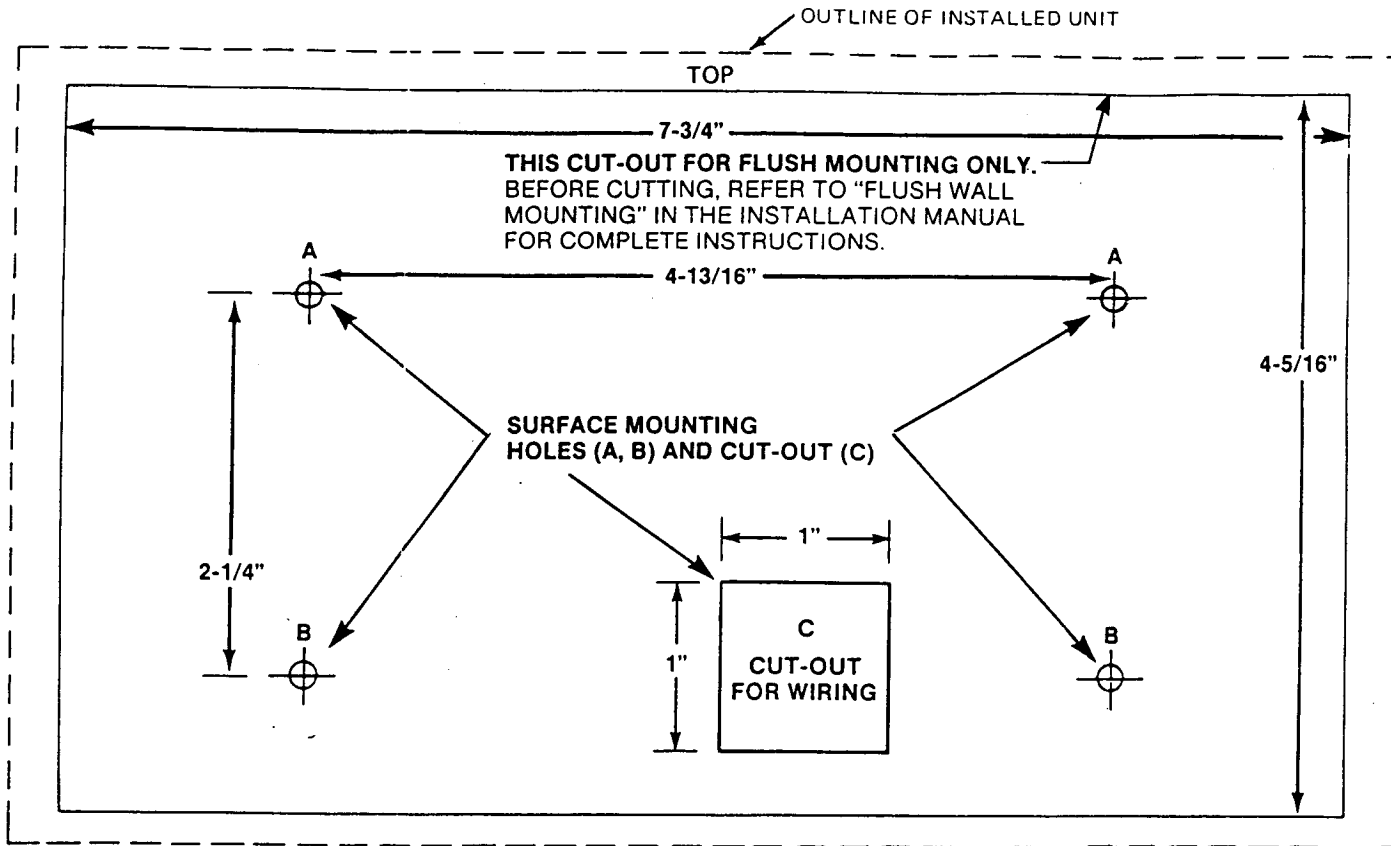
1. Mark the positions on the wall for the screw mounting holes and the cut-out for the wiring.
2. Pull the interface wiring in the wall through the cut-out.
3. Remove the console's back cover. The securing screw at the front of the console (under the nameplate) must be removed to release the back cover.
4. Pass the interface wiring through the opening in the back cover, then mount the back cover to the wall surface with screws.
5. Splice the interface wiring to the console harness wires and plug in the harness connector. Insulated solderless wire splices (e.g., 311) may be used for splicing.
6. Attach the main body of the console to the wall-mounted back cover. The console is properly attached when it snaps into place. Use the securing screw (previously removed) to secure the console to the back cover.



SPECIFICATIONS

4137AD, 5137AD REMOTE CONSOLES

1. **Physical:** 8.4"W x 4.75"H x 1.1"D
(213mm x 121mm x 28mm)
2. **Electrical:** Voltage Input: 12VDC
Current Drain: 60mA (4137AD)
90mA (5137AD)
3. **Interface Wiring:**
 - RED: 12VDC input (+)
 - BLUE: See Control's instructions
 - GREEN: Data Out to Control
 - YELLOW: Data In from Control
 - BLACK: Ground, and if used,
(-) connection from
supplementary power supply
(see Control's instructions)



INSTRUCTIONS FOR SURFACE MOUNTING

1. USE THIS TEMPLATE TO MARK LOCATIONS OF HOLES TO BE DRILLED IN MOUNTING SURFACE. HOLES A ARE FOR KEYSLOT MOUNTING; B ARE FOR OPTIONAL USE FOR EXTRA SECURITY OR FOR USE WITH THE ZONE LOCATOR CARD (SEE OPPOSITE SIDE OF THIS TEMPLATE); CUT-OUT C IS REQUIRED FOR WIRING ACCESS. BEFORE CUTTING, REFER

TO "SURFACE MOUNTING" AT LEFT FOR COMPLETE INSTRUCTIONS.

2. SCREWS INSTALLED IN LOCATIONS A SHOULD HAVE THEIR HEADS PROTRUDING APPROXIMATELY 1/16" FROM THE MOUNTING SURFACE (1/8" WITH THE ZONE LOCATOR CARD DESCRIBED ON THE OTHER SIDE).

SURFACE/FLUSH MOUNTING TEMPLATE FOR CONSOLES

ADDRESSABLE CONSOLE DIP SWITCH SETTINGS (4137AD, 5137AD)

ID	DIP SETTINGS				
	1	2	3	4	5
0	dn	dn	dn	dn	dn
1	dn	dn	dn	dn	UP
2	dn	dn	dn	UP	dn
3	dn	dn	dn	UP	UP
4	dn	dn	UP	dn	dn
5	dn	dn	UP	dn	UP
6	dn	dn	UP	UP	dn
7	dn	dn	UP	UP	UP
8	dn	UP	dn	dn	dn
9	dn	UP	dn	dn	UP
10	dn	UP	dn	UP	dn
11	dn	UP	dn	UP	UP
12	dn	UP	UP	dn	dn
13	dn	UP	UP	dn	UP
14	dn	UP	UP	UP	dn
15	dn	UP	UP	UP	UP
16	UP	dn	dn	dn	dn
17	UP	dn	dn	dn	UP
18	UP	dn	dn	UP	dn
19	UP	dn	dn	UP	UP
20	UP	dn	UP	dn	dn
21	UP	dn	UP	dn	UP
22	UP	dn	UP	UP	dn
23	UP	dn	UP	UP	UP
24	UP	UP	dn	dn	dn
25	UP	UP	dn	dn	UP
26	UP	UP	dn	UP	dn
27	UP	UP	dn	UP	UP
28	UP	UP	UP	dn	dn
29	UP	UP	UP	dn	UP
30	UP	UP	UP	UP	dn
31	UP	UP	UP	UP	UP

IMPORTANT!

PARTITIONED SYSTEM USERS:
The standard default enables only these 4 addresses (ID 0-3). Set at least one console to one of these addresses. Use programming mode to enable other console addresses.

NOTE:

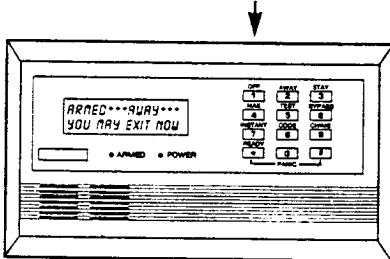
Some versions of the 5137AD console may have a 6-position DIP switch. The sixth switch is not used with some controls and should be put in the UP position. Refer to control's installation instructions.

ADDRESS "31"

Do not use address 31 with partitioned systems. Address 31 causes the console to operate in non-addressable mode (e.g., operates like the earlier non-addressable 5137 console).

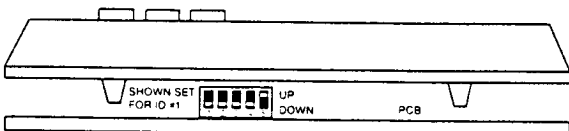
Address 31 is intended for use with controls that do not support addressable consoles.

DIP SWITCH ON PCB



FRONT VIEW

TOP VIEW



ADDRESSABLE CONSOLE

ZONE LOCATOR CARD INSTALLATION INSTRUCTIONS (FOR SURFACE MOUNTED 4137AD FIXED MESSAGE DISPLAY CONSOLES)

The Zone locator Card will serve as a handy reference to the user. Before starting the installation procedures, fill out the card by writing the zone/sensor descriptions on the lines provided or have the user fill in the information.

- A) Attach the self-adhesive rubber pads below the lower mounting holes of the case back.
- B) Screw the upper mounting screws to the mounting surface using the included fiber washers (see diagram B). Do not tighten the screws, leaving about 1/8" space between the mounting surface and the screw heads. Hang the case back on the upper mounting screws **TAKING CARE TO POSITION THE CASE BETWEEN THE SCREWHEADS AND THE WASHERS.**
- C) Install and tighten the LOWER mounting screws first and then tighten the upper screws. Notice that the fiber washers and the rubber pads have created a space behind the case.
- D) Insert the card as shown, positioning the slot in the card onto the left fiber washer.
- E) The card now pivots on the fiber washer.

